

Collage Self-Portrait

Objectives: Create a close-up, self-portrait collaging different colored paper. Colors can be natural/realistic or abstract/arbitrary, but the values should create the illusion of depth and have accurate form and proportions.

Materials:

- Heavy paper board (11" x 14" or larger): Matte, corrugated, railroad, cardboard.
(Not poster or bristol. They are too thin.)
- Glue (Choice)- Elmers, Modge Podge, Stick, Clear acrylic paint
- Scissors
- Ruler
- Pencil
- Photo printed
- Lots of colored paper (Choice) - Magazine, Tissue, Printed
- Optional - Hole punch, exacto blade, tweezers, toothpick (These can be used for shaping the paper or applying small pieces precisely to your collage)



Step 1

Five Expressive Photos. Please see the separate assignment sheet for this. You may change the photos after, but turn in 5 so we can start up the communication now about what is working and what may change!

Step 2

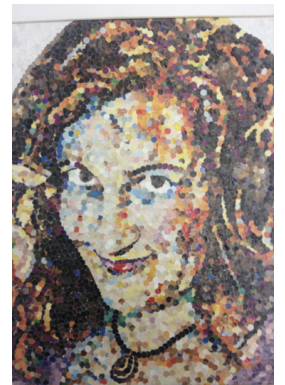
Once you have found a great, teacher approved, photo, use a grid to enlarge it onto an 11" x 14" piece or larger of matte board or solid piece of cardboard or corrugated board (use a pencil to draw the image). Make sure you are using a thick¹ board of some kind. Not posterboard! A piece of a box from your recycling bin will be stronger and more stable than a posterboard. You can also use Matte board, like would be used to put around a picture before you frame it. Hobby Lobby or Michael's will carry matte board. You can work larger but please not smaller! Collect Papers and start cutting/ripping and sorting them.

Step 3 Grid Draw

Once you have found a great photo, use a grid to enlarge it onto an 11" x 14" or larger board.

Step 4 This will definitely take longer than you expect!! A *lot* longer.

Paste small color pieces from cut magazine pictures to create a portrait full of color variation, form and detail. Pieces should not be wider than 1/4 inch and no longer than 1/2 inch, (about the size of an M&M) They can be cut, ripped, hole-punched, etc. Tip – Some students have said they like to make piles of colors before they start pasting them onto the grid. Place color chips side-by-side to each other - warm analogous greens next to cool analogous greens; cool analogous yellows next to warm analogous yellows. Be Brave! Try placing complementary colors side-by-side to create vibrant color effects. Step-back often from your piece and squint your eyes to see how the values and colors are optically mixing to create form.



****Tally your time! On the back, keep a tally for how many hours you spend on the project!!**