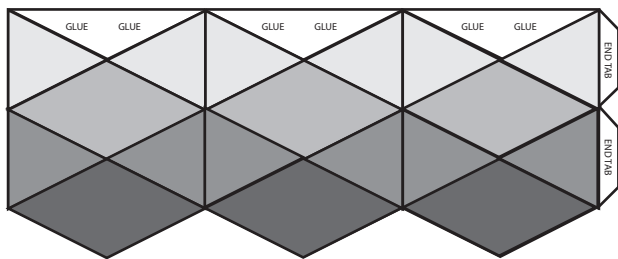
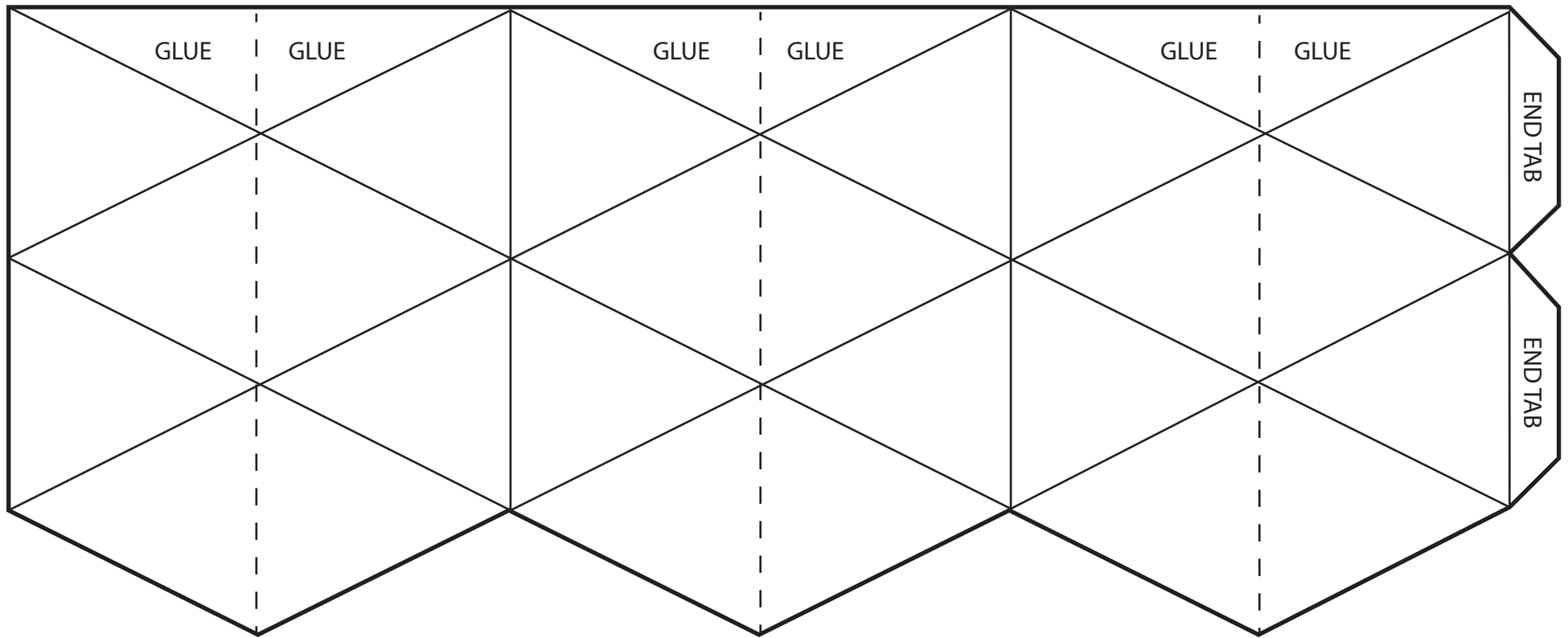


# Flexangle



-  Design 1
-  Design 2
-  Design 3
-  Design 4

1. Create your designs. Each design will show in together in the rotation, see guide to the left.
2. Cut the outline in bold out.
3. Crease the dashed line by folding face to face and unfolding.
4. Crease the diagonal lines back to back.
5. Add tack glue to the areas indicated and glue Design 4 to those areas. That will allow a tube shape to form.
6. Glue the end tabs and insert into the slot on the other end.