

# Radial Balance



# Hexaflexagons

Where art and math come together!

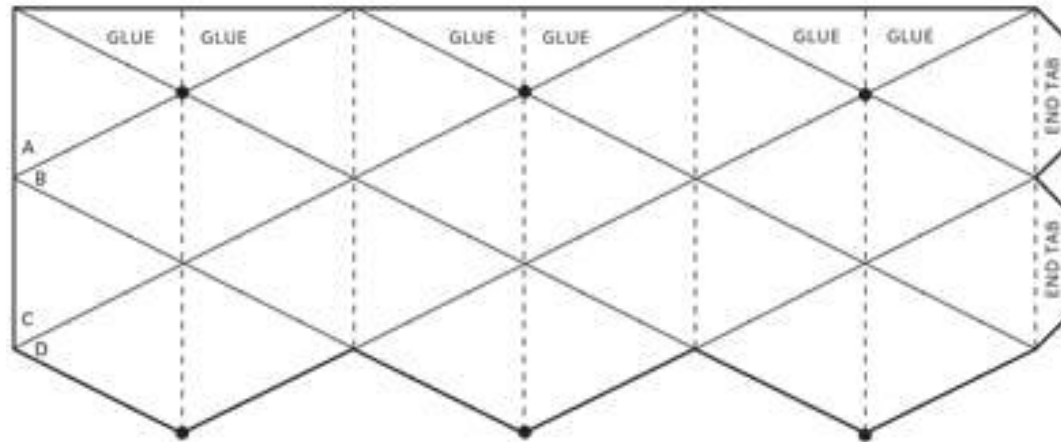
# What is a hexaflexagon?

- 3D-24 sided figure that can be folded and manipulated into a variety of combinations



# What is a hexaflexagon?

## Flexangle Template



### Pattern Guide



### Instructions:

1. Draw different designs in each row of triangular sides. Refer to Pattern Guide for row layout. Be sure to connect the designs at the tick marks.
2. Cut along solid line.
3. Crease dashed lines face to face. Unfold.
4. Crease diagonal lines back to back. Unfold.
5. Gently fold paper to match dot to dot and form a tube.
6. Add glue on tabs marked GLUE and press together.
7. Add glue on end tabs and tuck into open end of tube. Press to seal.

## What will you do?

- You will work on creating your own smaller hexaflexagon on the papers you get.
- It is important you work on the radial balance and hot vs cold colors that Mrs. Czajka discussed.



# Creating your own

- Follow the directions on the sheet of paper
  - Draw different designs in each row of triangular sides. Remember using cold/warm colors and the designs from Mrs. Czajka.
  - Try to connect the designs at the dotted lines.
  - Cut along bold line.
  - Crease dashed lines face to face. Unfold.
  - Crease diagonal lines back to back. Unfold.
  - Gently fold paper to match dot to dot and form a tube.
  - Add glue on tabs marked GLUE and press together.
  - Add glue on end tabs and tuck into end of tube. Press to seal.



# What's next?

- We will break into groups of 24
  - Each group will need be broken down into grade level groups of 6 kids
  - The groups of 6 will need to decide a color scheme following Mrs. Czajk's directions with colors
  - Then groups of 6 will partner up to make sure their triangles will connect on the dotted lines. Once your rough draft is approved you will get a foam board to work on as your final copy.
- 