

The background of the image is a complex, abstract pen and ink drawing. It features a variety of organic, wavy, and swirling lines in white and black. Some areas are filled with a dense pattern of small dots, creating a halftone effect. The overall composition is dynamic and visually rich, with a strong sense of movement and depth. The drawing is set against a solid black background, which makes the white lines and patterns stand out prominently.

# Pen and Ink Composite Drawings

McArthur - Drawing

# Objectives of the Project

**Main Objectives:** Create an Ink drawing about animal conservation.

**Secondary Objectives:**

- Examine the art of Alfred Basha. <https://alfredbasha.com/>
- Investigation Wildlife Conservation
- Use adobe photoshop to create a composition
- Transfer design to paper
- Practice Ink Techniques
  - Hatching
  - Cross Hatching
  - Scumbling
  - Stippling
- Use ink techniques to create your design on your paper
- Reflect on your drawing

# Standards

## Art

### **VA:Cr1.2.1a V**

Shape an artistic investigation of an aspect of present day life using a contemporary practice of art or design.

### **VA:Cr2.1.IIIa**

Experiment, plan, and make multiple works of art and design that explore a personally meaningful theme, idea, or concept.

### **VA:Cr3.1.IIIa**

Reflect on, reengage, revise, and refine works of art or design considering relevant traditional and contemporary criteria as well as personal artistic vision.

### **VA:Pr6.1.IIa**

Make, explain, and justify connections between artists or artwork and social, cultural, and political history.

### **VA:Re.7.1.IIa**

Recognize and describe personal aesthetic and empathetic responses to the natural world and constructed environments

### **VA:Re9.1.Ia**

Establish relevant criteria in order to evaluate a work of art or collection of works.

### **VA:Cn11.1.IIa**

Compare uses of art in a variety of societal, cultural, and historical contexts and make connections to uses of art in contemporary and local contexts.

## Science

### **LS2.C: Ecosystem Dynamics, Functioning, and Resilience**

A complex set of interactions within an ecosystem can keep its numbers and types of organisms relatively constant over long periods of time under stable conditions. If a modest biological or physical disturbance to an ecosystem occurs, it may return to its more or less original status (i.e., the ecosystem is resilient), as opposed to becoming a very different ecosystem. Extreme fluctuations in conditions or the size of any population, however, can challenge the functioning of ecosystems in terms of resources and habitat availability. (HS-LS2-2),(HS-LS2-6)

Moreover, anthropogenic changes (induced by human activity) in the environment—including habitat destruction, pollution, introduction of invasive species, overexploitation, and climate change—can disrupt an ecosystem and threaten the survival of some species. (HS-LS2-7)

### **LS2.D: Social Interactions and Group Behavior**

Group behavior has evolved because membership can increase the chances of survival for individuals and their genetic relatives. (HS-LS2-8)

### **LS4.C: Adaptation**

Changes in the physical environment, whether naturally occurring or human induced, have thus contributed to the expansion of some species, the emergence of new distinct species as populations diverge under different conditions, and the decline—and sometimes the extinction—of some species. (HS-LS4-6)

### **LS4.D: Biodiversity and Humans**

Biodiversity is increased by the formation of new species (speciation) and decreased by the loss of species (extinction). (secondary to HS-LS2-7)  
Humans depend on the living world for the resources and other benefits provided by biodiversity. But human activity is also having adverse impacts on biodiversity through overpopulation, overexploitation, habitat destruction, pollution, introduction of invasive species, and climate change. Thus sustaining biodiversity so that ecosystem functioning and productivity are maintained is essential to supporting and enhancing life on Earth. Sustaining biodiversity also aids humanity by preserving landscapes of recreational or inspirational value. (secondary to HS-LS2-7),(HS-LS4-6.)

## Technology

### **1.6 a**

*Students create original works or responsibly repurpose or remix digital resources into new creations.*

### **1.4.b.**

*Select and use digital tools to plan and manage a design process that considers design constraints and calculated risks.*

### **1.1.c.**

*Use technology to seek feedback that informs and improves their practice and to demonstrate their learning in a variety of ways.*

### **1.2.b.**

*Engage in positive, safe, legal and ethical behavior when using technology, including social interactions online or when using networked devices.*

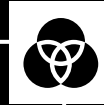
### **1.3.a.**

*Plan and employ effective research strategies to locate information and other resources for their intellectual or creative pursuits.*

# Parts of the Project

## Artist Investigation

Look at the art of Alfred Basha



## Research Concept

Brainstorm animal conservation causes / efforts

## Photoshop Creation

Create a composite image in Photoshop



## Create Ink Drawing

Using you composite image as reference, Recreate in ink

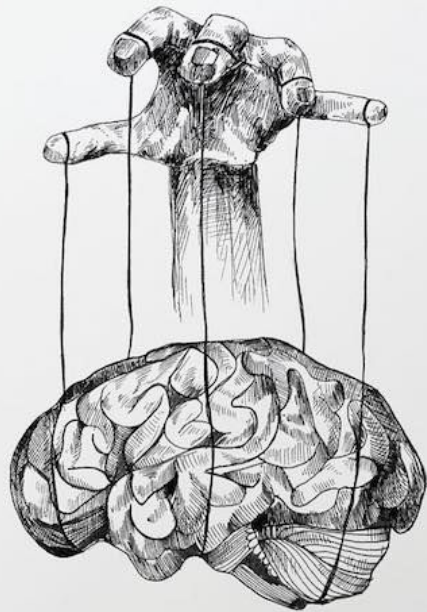
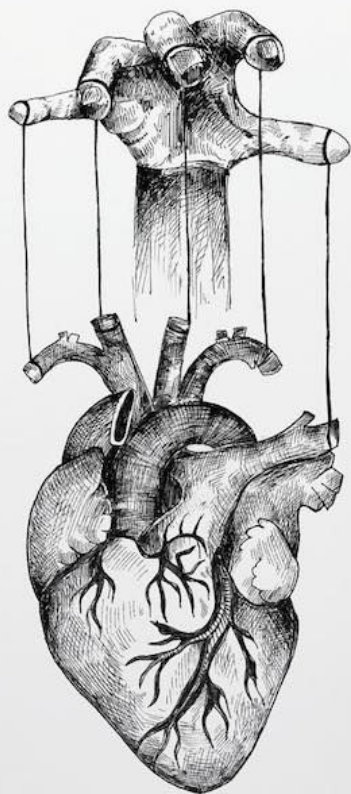
# Alfred Basha



- Born in 1990, Kruje, Albania
- Lives in Venice
- Graduated in Industrial product design at the IUAV in Venice
- Today he collaborates with international fashion, food & beverage companies and publishing houses, such as Bloomsbury, known worldwide for having published "Harry Potter"
- He loves to draw on paper
- His poetry is characterized by a nature in continuous metamorphosis that leads us to the discovery of our inner self and the presence of wild animals that fascinate the artist as free and wild creatures that he loves to represent in their habitat to express the primordial and intrinsic strength.*

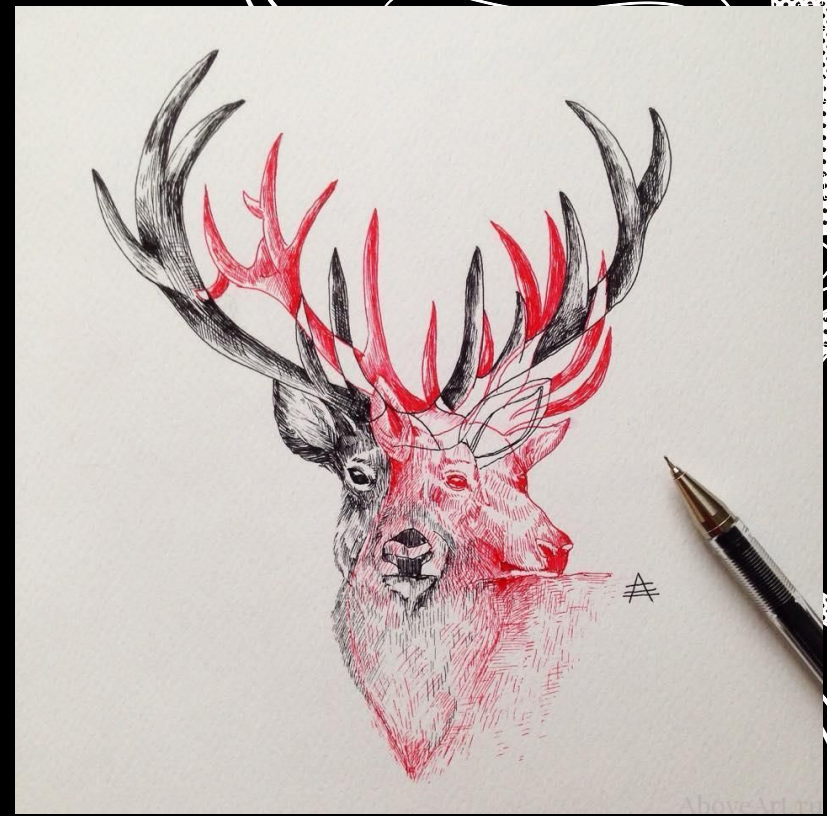






©ALFRED BASHA







# Your Project

1. Brainstorm Wildlife Conservation imagery
2. Create a design in Adobe Photoshop using multiple images. Your design should represent Animal Conservation in someway.
3. Transfer your design to your drawing board.
4. Learn Ink/Marker Shading Techniques.
5. Use your techniques to complete your drawing.



**What is  
Animal/Wildlife  
Conservation?**



## What is it?

Wildlife conservation refers to the practice of protecting wild species and their habitats in order to maintain healthy wildlife species or populations and to restore, protect or enhance natural ecosystems.



## What can I do?

Artists, like Environmental filmmakers and photographers, are essential to conservation efforts by documenting and bringing attention to endangered wildlife all over the world. They are working to slow the extinction of global species and to protect global biodiversity and habitats.



# Sonny Behan



Complete the artist investigation in Schoology

[https://drive.google.com/file/d/1C1R3mNvzbNzbKczYpxREvIH54K\\_FSuSI/view?usp=sharing](https://drive.google.com/file/d/1C1R3mNvzbNzbKczYpxREvIH54K_FSuSI/view?usp=sharing)

# Illinois Wildlife Conservation

Here is a list of the endangered and threatened species in illinois...

[https://drive.google.com/file/d/1M4zh1OiPYW\\_DtJTYve7qe\\_jWJS7ANBzQ/view?usp=sharing](https://drive.google.com/file/d/1M4zh1OiPYW_DtJTYve7qe_jWJS7ANBzQ/view?usp=sharing)

***There are 480 animals and plants currently listed on the endangered and threatened species list.***

Here a few that caught my attention:

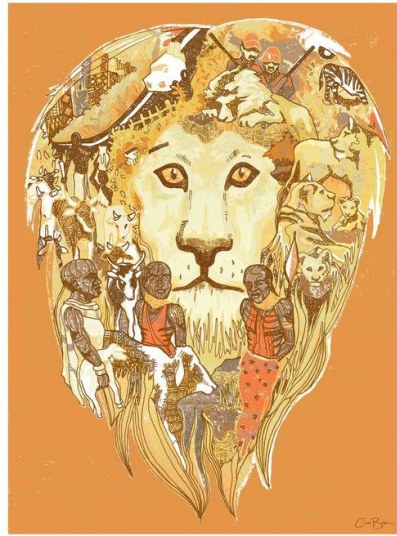
- Piping Plover
- Barn Owl
- Short-Earred Owl
- Timber/Gray Wolf
- Southeastern Myotis (Bat)
- Rusty Patched Bumble Bee
- Swainson's Hawk
- Lake Sturgeon



# Brainstorm IDEAS

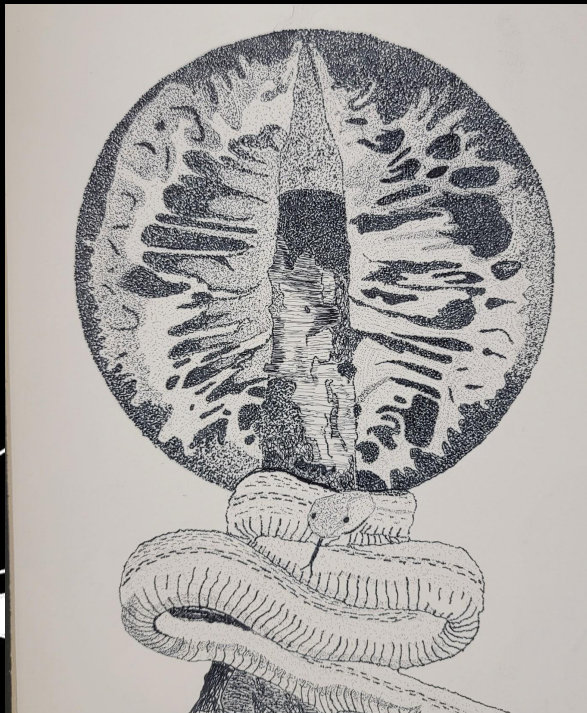
What are some words that come to mind when thinking about wildlife conservation?

- In your sketchbook write down some animals from illinois endangered/threatened list.
- **Your design will have at least 3 to 4 images**
- Write down other things that would go with your animal and support conservation or call for it
  - Support- People, hands, gloves, plant life, habitat, etc...
  - Causes- Plastics, deforestation, garbage, hunting, etc...

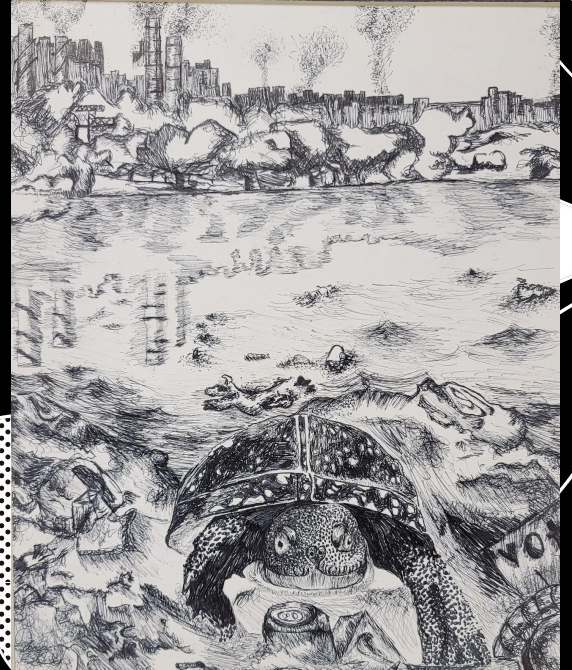
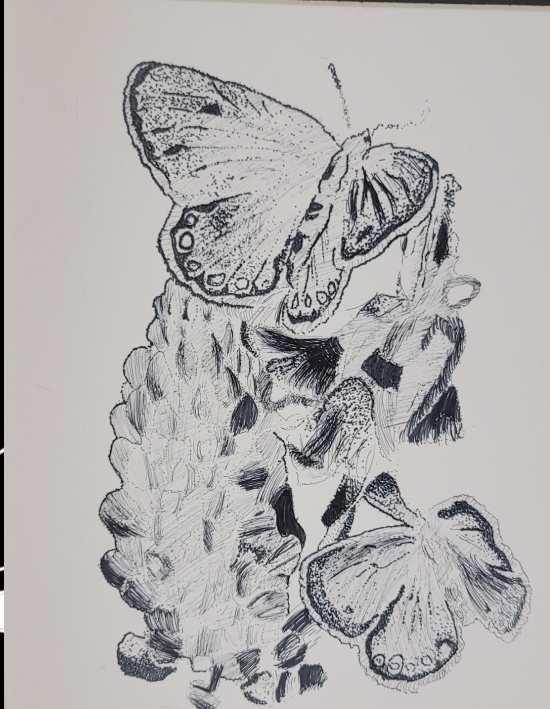




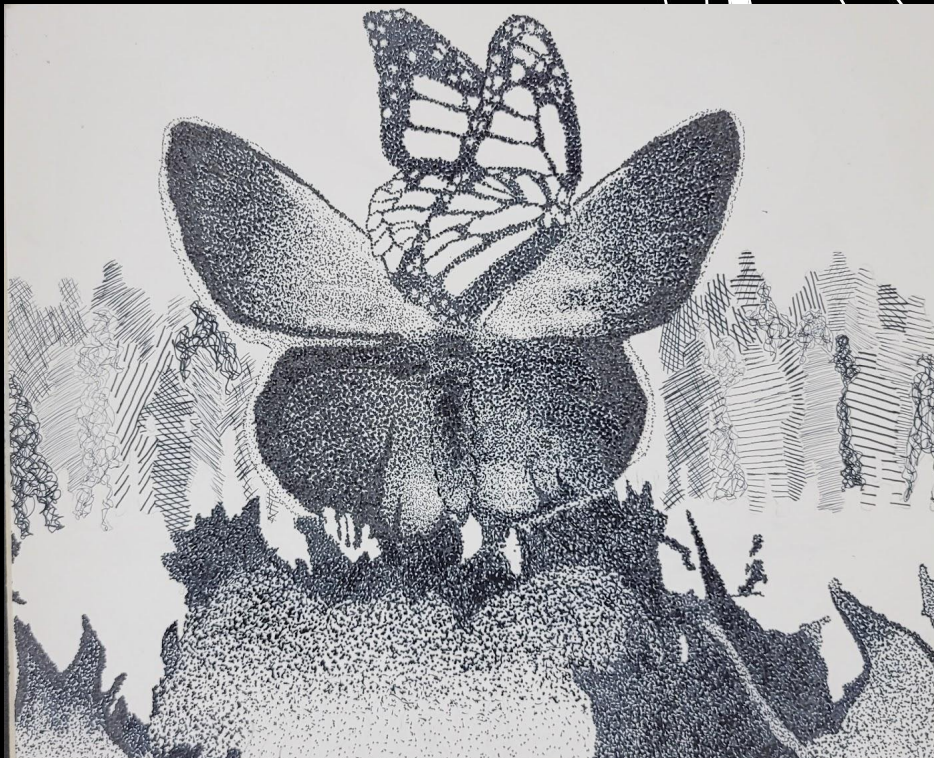
# Student Examples



# Student Examples



# Student Examples



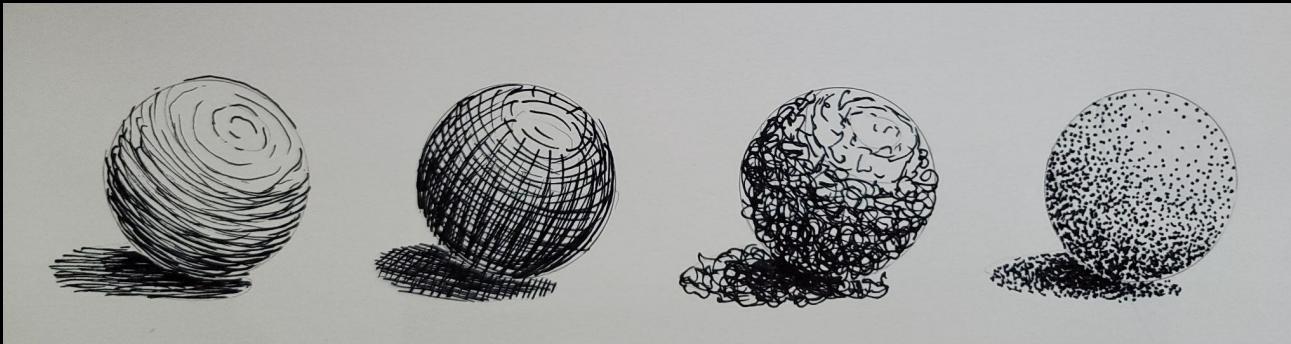
# Ink Shading Techniques

**Hatching**- Linear line shading creates line in one direction to show value, lines are spaced to control the darkness of the value

**Cross Hatching**- Lines that cross and are layered to create value- There is also cross contour hatching.

**Scumbling** - Scribbly, loose lines that create value

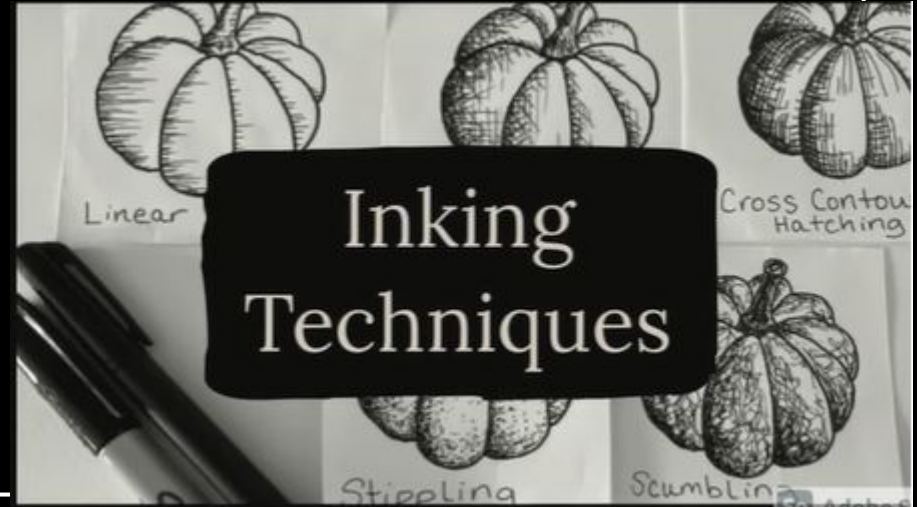
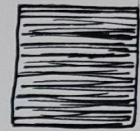
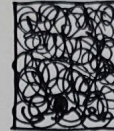
**Stippling**- Dots that are used to create value



# Ink Shading Techniques

Let's Practice these techniques:

- Complete the worksheet given to you.
- Use your pens to create a box value scale using these techniques
- Turn in your worksheet
- Complete Edpuzzle and practice your value techniques on 5 forms in your sketchbook
- You will be drawing with the video, pause when needed



# Inking Tips

- Marks should follow the shape of the form you are creating
- Keep your marks neat as possible
- Slow down and have purpose
- Use the right mark for the right situation

## Final Exercise:

Complete the Form and Line drawing technique worksheet using your ink pens.

Be creative and take your time.



# Sketches

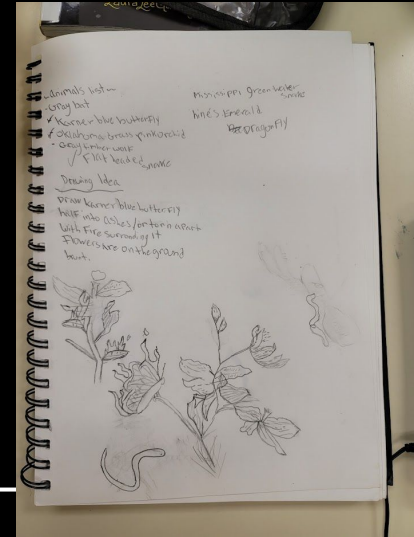
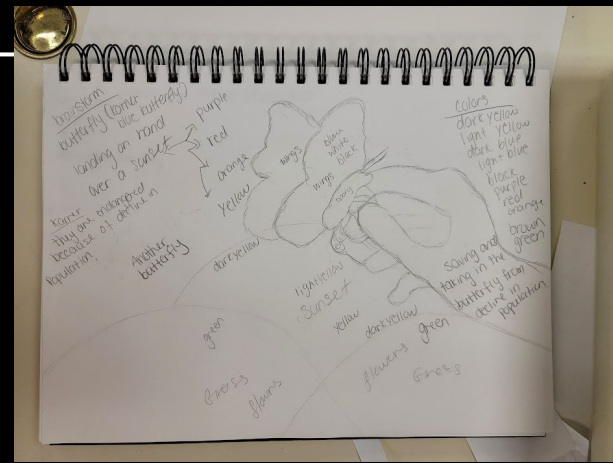
## Time to research your project Ideas.

Use google and other informational websites to find images to support animal conservation or cause the need for it.

Download these images to your IPAD.

In your sketchbook begin combining these images into interesting combinations.

- Make sure you are telling a "story"
- Make sure you are thinking about what pen techniques you plan on incorporating.
- 3 different sketches will be checked in.



# Creating the Image in Adobe Photoshop

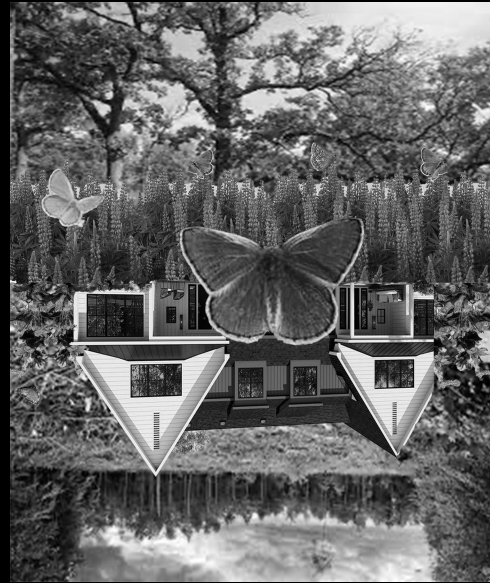
1. Log into Adobe Photoshop for the IPAD
2. Open an Artboard that is 10in x12in
3. On the toolbar to the right click the “Image” Icon
4. Insert one of the Images you have used to inspire your sketches that you have saved to your IPAD
5. When you select the picture you will be asked to adjust the size. Pull from the corners to adjust with losing your proportions.
6. Use the subject selection tool to cut your image from the background, you can use this video to help you find it.
7. Add more images to your composition.
8. Adjust the layers to send images to the front or back.



\*See the teacher for more help, be sure to take notes during the demonstration!



# Examples of good compositions...





# Sources

- <https://mymodernmet.com/pen-and-ink-drawings-alfred-basha/>
- <https://steemit.com/art/@winizart/inspiration-artist-alfred-basha>
- <https://allpoetry.com/contest/2795911-Human-within-for-LNPs-Part-Sinner--Part-Sai>
- <https://guides.library.illinois.edu/c.php?q=348135&p=3743736>
- <https://sonnyonline.com/biography/>

CREDITS: This presentation template was created by **Slidesgo**, including icons by **Flaticon**, infographics & images by **Freepik**