

# Mola-Inspired Cut Paper Project Process

1

Learn about Molas and look at examples.

2

Sketch 2-5 potential ideas for your Mola after reading **Design Considerations** in the right column.

3

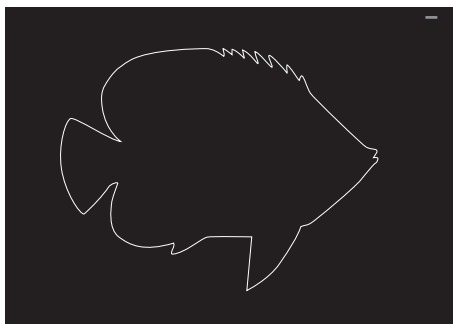
Learn how to use an X-Acto knife effectively and safely from a demo by your teacher.

4

Practice! I recommend trying an idea out on a small (5x7 inch) practice Mola. Try a bird or a fish. Start by stacking black construction paper and two more colors you want to see in your design. You can incorporate other colors as “spot” colors. More on that later. Stack your sheets with black on the top and staple the top right and left side.

5

Draw your fish or bird with a white color pencil. Keep it light, as construction paper doesn't erase particularly well. Don't draw more than the outline!



## Design Considerations

### Subject Matter

The Kuna women find their ideas from a variety of sources. Nature is a dominant theme because of their close association with birds, animals, sea life, plants and flowers in everyday living. Tribal teachings, superstitions and village life also make up traditional subject matter. Geometric patterns are also popular, often interspersed with recognizable life forms. Even dreams, fantasies, monsters and spirits find their ways into the Kuna designs.

### Color

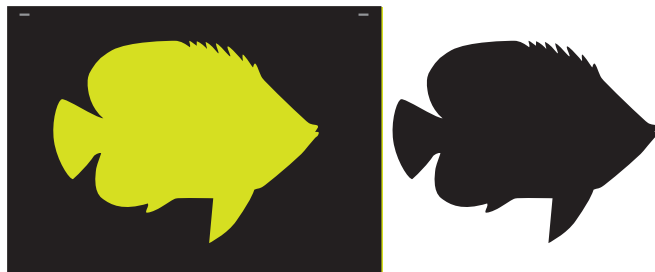
Red, yellow, and dark blue or black remain the most common colors- the last being the top color typically. Use strong vibrant colors.

### Shape and Composition

Mola Designs are very active with shapes filling the entire space. There is no expanses of solid color left blank. Look through Molas and you will see some of the ways they use

6

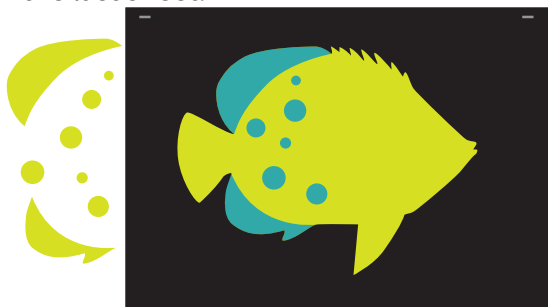
You can cut your fish out with the X-Acto knife now. If you are worried about cutting through more than just the black layer, slip your cutting mat under the black paper before cutting.



# Mola-Inspired Cut Paper Project Process

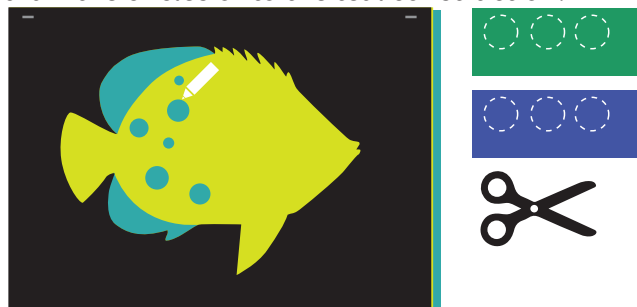
6

You can now remove shapes from the yellow layer and remove. Again, place the cutting mat under the yellow construction paper to protect other layers. You can see that a teal color was the last sheet.



7

Let's say you would like the spots on the fish to be green and blue. Cut some circles bigger than the ones you have from scraps of blue and green construction paper. Use a white pencil to draw the circles onto the teal construction.



8

Open to the teal color where you drew the circles. Use **small drops** of craft glue to **tack** the circles you cut down.



9

Flip back to see your progress!



10

Keep Going! Remember, no flat areas of solid color! In the example below, the pink colors were spot-colored as well. Another way to spot color large areas is to define the shape with tracing paper, cut it out of construction paper, and tack it down with a small amount of craft glue on the edges of the appropriate layer. It's important to use a small amount of glue and only on the hidden edges because you may want to cut through the construction paper later..

