

Parody in Art

What is a Parody? A parody is an imitation of the style of a particular writer, artist, or genre with deliberate exaggeration for comic effect. We view examples of parodies on television while watching shows like "Saturday Night Live" and "The Daily Show." They create parodies of newscasts by doing fake newscasts that look like the real thing.

Even Shakespeare utilized parody when writing Sonnet 130. In the sonnet, he pokes fun at the poems of the Elizabethan era suggesting the language has become cliché, predictable, and uninspiring.

What is a Parody in Art? Parody refers to a new creative work which uses an existing work for humor or mockery. Some parodies take aim at well-known artists or their work in order to make a critique. Another kind of parody uses existing work to draw attention to or comment

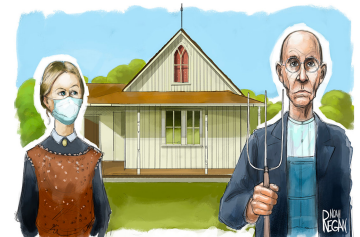
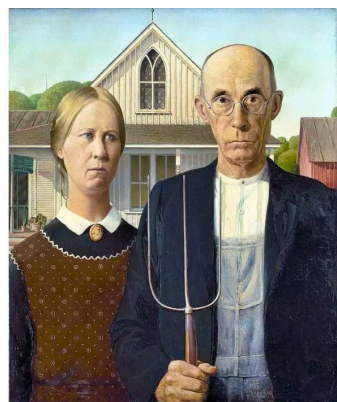
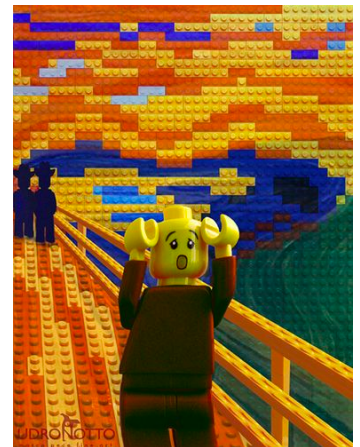
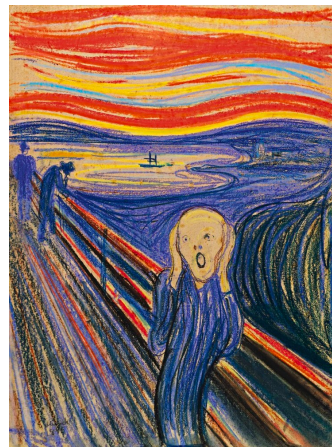


upon a particular social phenomenon or issue. Check out the parodies you can find on the bottom of these pages.

Is it legal? Parodies are protected under the fair use doctrine of United States copyright law. Fair use in United States law permits limited use of copyrighted material without having to first acquire permission from the copyright holder.

The Challenge Using the space on the third page, create a parody of a famous piece of art. Remember, the work needs to be widely recognized. Some possible works include:

1. Mona Lisa by Leonardo da Vinci
2. The Kiss by Gustav Klimt
3. Whistler's Mother by James McNeill Whistler
4. Girl With a Pearl by Johannes Vermeer
5. Christina's World by Andrew Wyeth
6. Nighthawks by Edward Hopper
7. The Great Wave off Kanagawa by Katsushika Hokusai

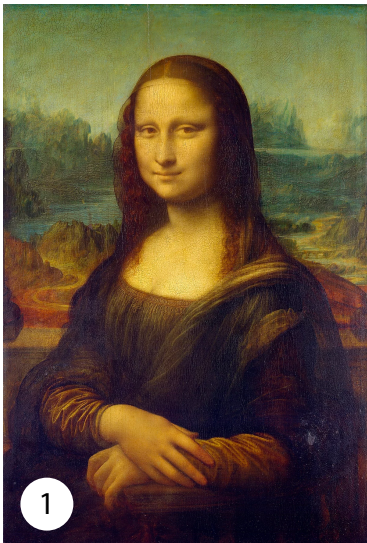


Left, Parody of Salvador Dalí's Persistence of Memory

Above top, Parody of The Scream by Edvard Munch

Above bottom, Parody of American Gothic

Parody in Art cont.



Parody in Art cont.

Name _____

